



SAI
MEHAR
2 BHK Specious Home Punawale

The logo features the letters 'SM' in a large, bold, yellow font with a black outline, set within a yellow circular frame. Above the 'SM' are three black vertical bars of varying heights, resembling a stylized building or skyline. Below the logo, the text 'SAI' is in a smaller, bold, black font, and 'MEHAR' is in a very large, bold, black font. At the bottom, the text '2 BHK Specious Home Punawale' is written in a black, italicized font.



About Company

Years of experience has helped Sacho Satram Group fashion many landmark projects in Pune. Committed to their core values of integrity, equality and excellence with a steadfast financial perspective and a revolutionary vision, Sacho Satram Group fulfills its commitments, always on time. Engineered to perfection, only the best of the materials and methods are efficiently used by qualified and trained personnel showing the Group's commitment towards quality work and loyalty towards its customers.

Not only does every project by Sacho Satram Group stand head and shoulders above the rest, but also offers its esteemed clientele excellent value for money and satisfaction.



LEGACY



14+

Landmarks



3K+

Happy Residence



18+

Years Of Experience



10L+

SQ.FT Area Developed

About Project

Welcome to Sai Mehar, where your dream of a tranquil and spacious home becomes a reality. We have envisioned this project to provide you with a living experience full of comfort and contentment. Offering hearty layouts, our flats are more than just a place to live; they are a sanctuary of blissful living.

Each unit at Sai Mehar is thoughtfully designed with spaciousness as a priority, ensuring that your family has an ample living space. Based in the rapidly developing location of Punawale, Sai Mehar offers the best of both worlds.

Indulge in the convenience of a prime location while you enjoy the serenity and tranquility that our project provides.

With the ever-growing demand for quality residences in this sought-after location, the value of your investment is bound to appreciate over time. Our project presents a unique opportunity to secure your future and enjoy the present comforts of a blissful home.

Discover the true meaning of blissful living, only at Sai Mehar. Embrace spaciousness, revel in serenity, and unlock the potential for a lifetime of contentment. Come join our community and experience the perfect blend of comfort, convenience, and investment opportunity that awaits you.



A family of three is shown in a lush, green field of purple lavender. The father, on the left, is wearing a white button-down shirt and blue jeans, holding a young child in a white sleeveless dress. The mother, on the right, is wearing a white embroidered blouse and a pink wide-brimmed hat, smiling at the father. The background is a soft-focus field of lavender under a bright sky.

Discover the **dream** home with **Mehar**

The Meharful Living concept encourages individuals to approach life with grace and finesse, appreciating the beauty in simplicity and finding joy in every moment.



Project Highlights

Spacious Carpet Area Homes

Prime Central Location

Excellent Natural Ventilation

Vastu-Compliant Homes

Developed by an Experienced Builder

Flats with Dual Balconies

Calm & Peaceful Environment

Specification

Wall Finish

Earthquake-resistant RCC framed structure

Walls

AAC blocks for external and internal walls

External sand-faced plaster finish

Internal gypsum finish for smooth walls

Doors

Main Door: Veneer finish door with safety lock

Internal Doors: Veneer flush doors

Windows

Powder-coated aluminium sliding windows with safety grills

Terrace

Glass railings with anti-skid tiles

Toilets

Designer ceramic tiles up to lintel level

Quality CP fittings

Provision for exhaust fan in all bathrooms

Concealed plumbing work

Branded sanitary ware

Flooring

Premium vitrified tiles in all rooms

Anti-skid tiles in toilets and bathrooms

Wall Finish / Paint

External Apex paint finish

Internal emulsion paint finish

Kitchen

Dado tiles up to 4 ft above the kitchen platform

Provision for water purifier

Provision for exhaust fan

Granite platform with stainless steel (SS) sink

Provision for washing machine point in dry terrace

Electrification

Concealed fire-resistant copper wiring

Stylish modular switches

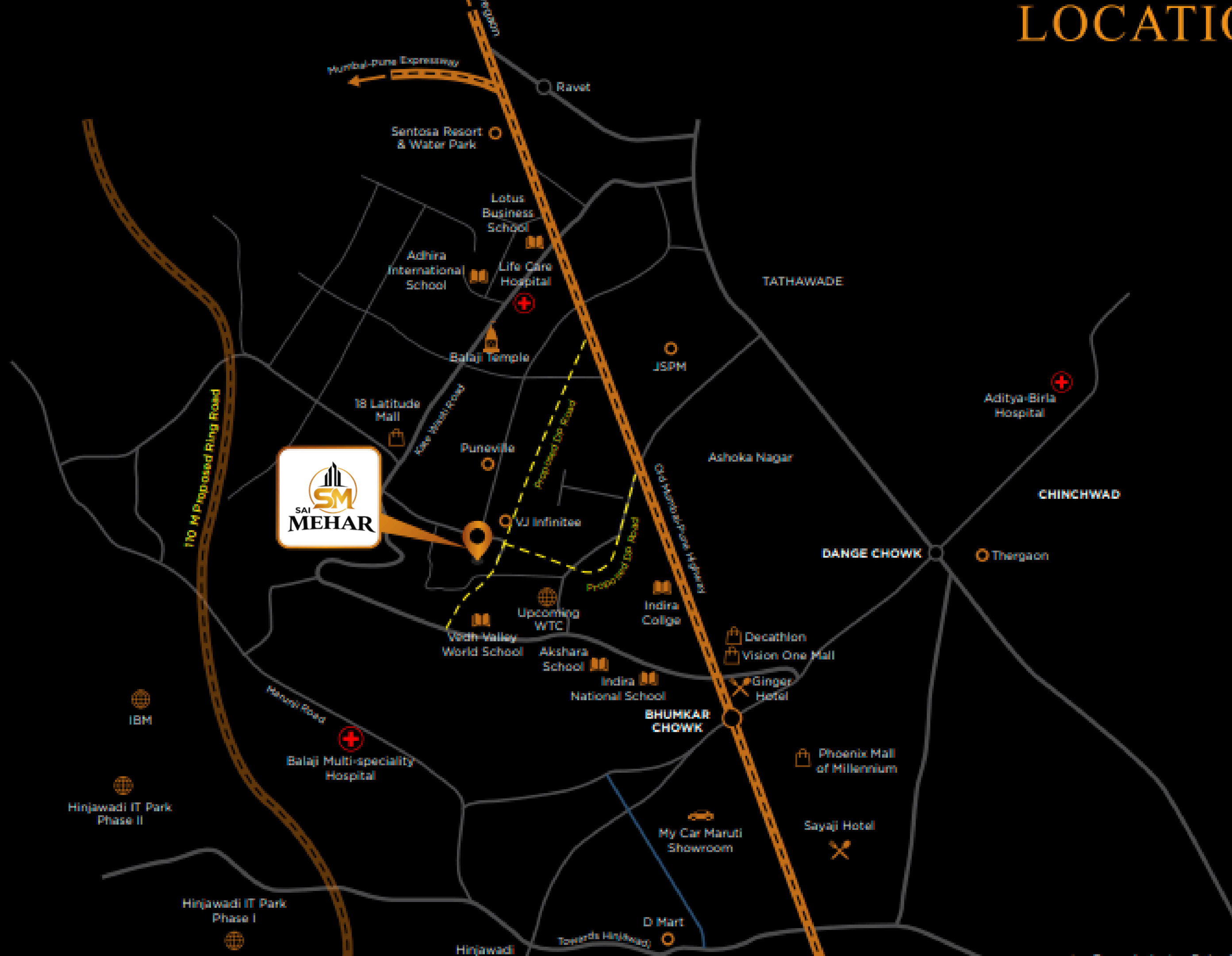
Provision for AC point in master bedroom

Provision for TV point and internet connection

Provision for inverter point

Video door phone for added security

LOCATION MAP



HP Petrol Pump – 2.0 km

Life Care Hospital – 2.1 km

JSPM College – 3.4 km

Akshara International School – 3.5 km

Dr. D. Y. Patil College – 3.6 km

Indira College – 4.0 km

Indira National School – 4.2 km

Decathlon – 4.5 km

Vision One Mall – 4.5 km

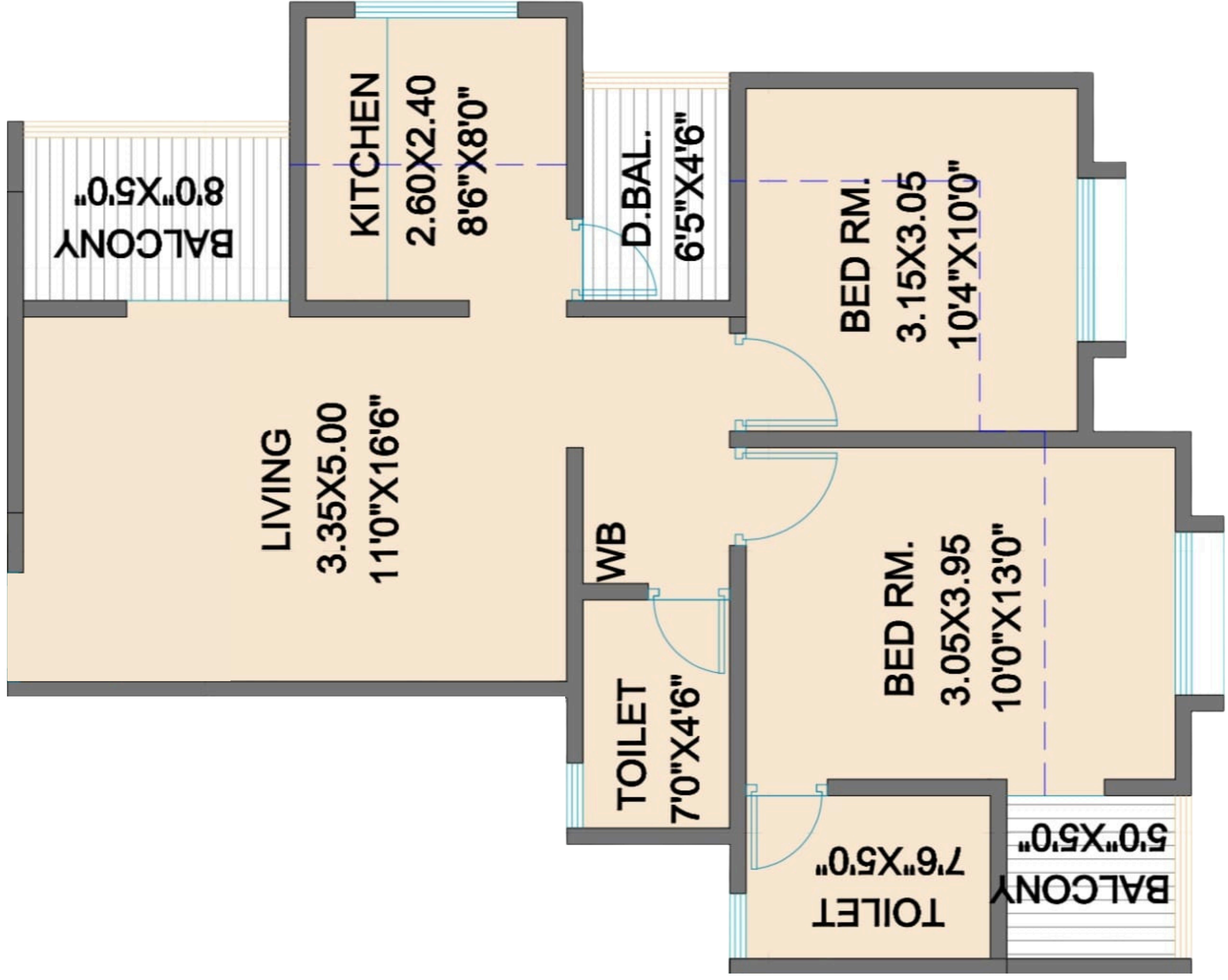
Sayaji Hotel – 5.8 km

Upcoming World Trade Center – 2.5 km

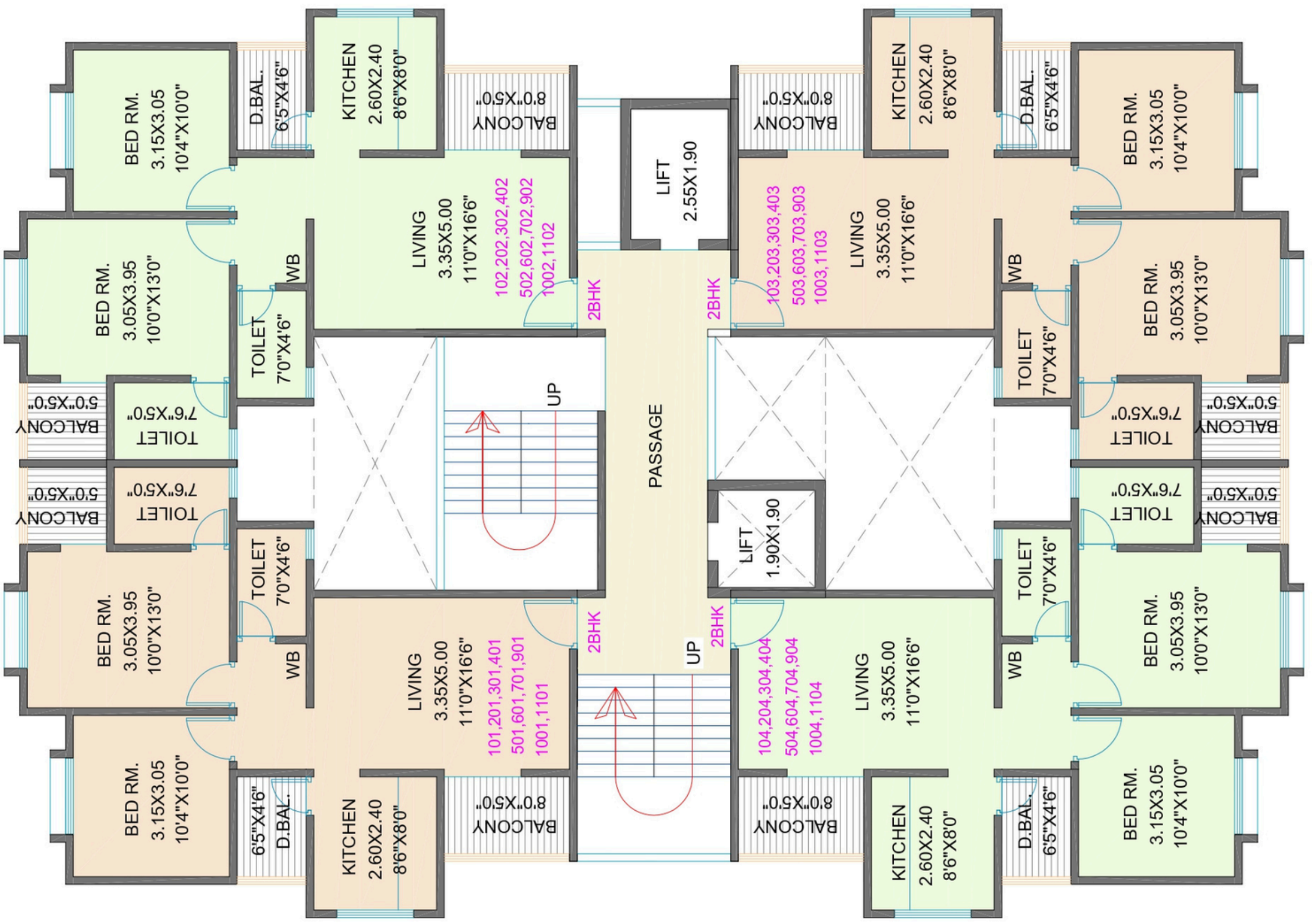
Upcoming Panchshil IT Park – 5.0 km

Phoenix Mall of the Millennium – 6.4 km

Unit Plan



Floor Plan



TYP. 1st,2nd,3rd,4th,5th,6th,7th,9th,10th& 11TH FLOOR

APARTMENT NO.	CARPET AREA OF APARTMENT	AREA OF BALCONY ATTACHED TO APARTMENT	AREA OF BALCONY ATTACHED TO APARTMENT	TOTAL AREA IN SQ.M.	TOTAL AREA IN SQ.FT.
2BHK	46.60	12.02	8.63	67.25	723.88

PROJECT DETAILS

PROPOSED RESI. BUILDING
S.NO.21 AT.- PUNNAVALE, PUNE

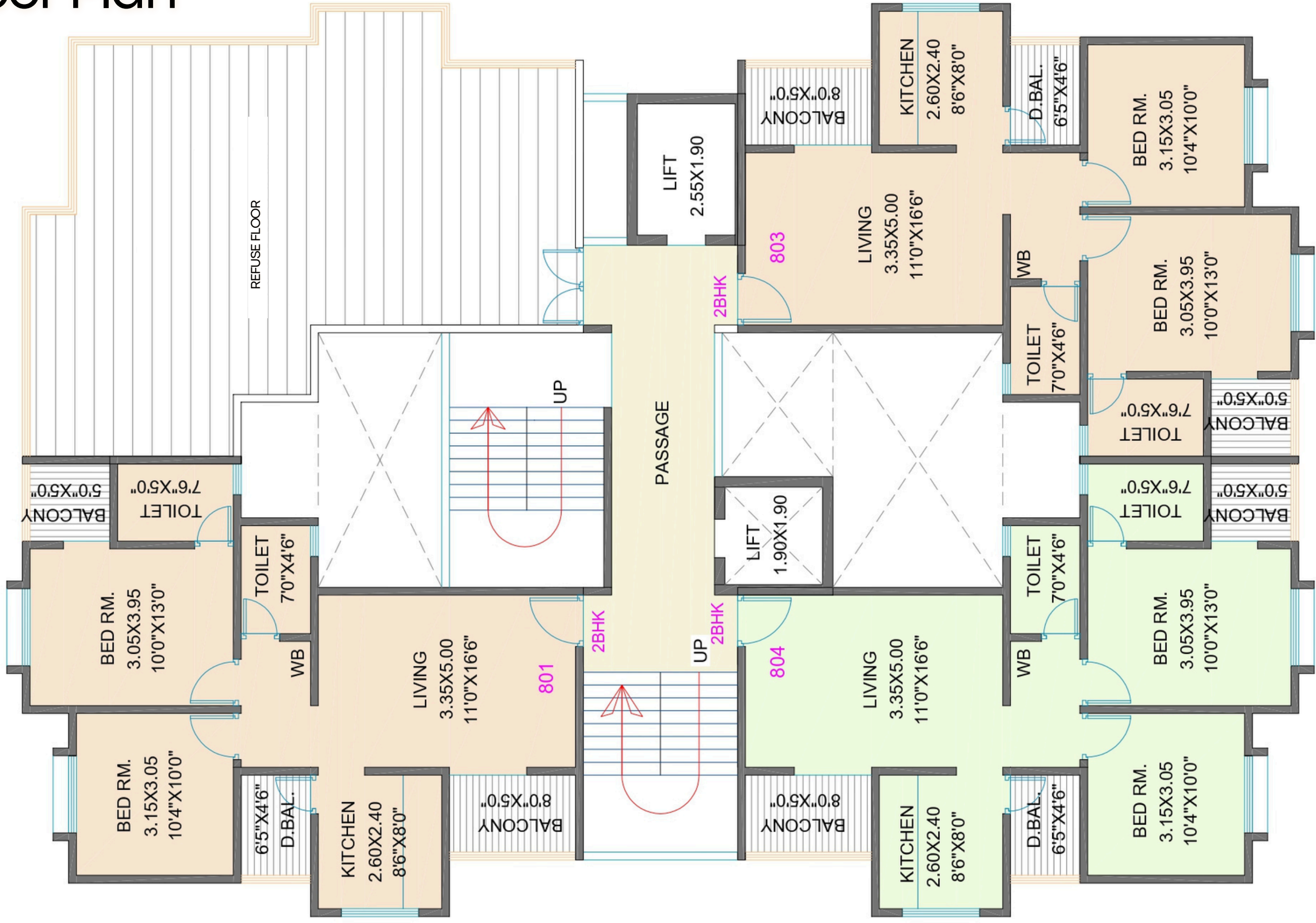


DATE - 21/08/2024

B+P+12 FLOOR

PRODUCED BY AN AUTODESK EDUCATIONAL PRODUCT

Floor Plan



8th FLOOR

APARTMENT NO.	CARPET AREA OF APARTMENT	AREA OF BALCONY ATTACHED TO APARTMENT	TOTAL AREA ATTACHED TO APARTMENT	TOTAL AREA IN SQ.M.	TOTAL AREA IN SQ.FT.
2BHK	46.60	12.02	8.63	67.25	723.88

PROJECT DETAILS

PROPOSED RESI. BUILDING

S.NO.21 AT.- PUNNAVALE ,PUNE

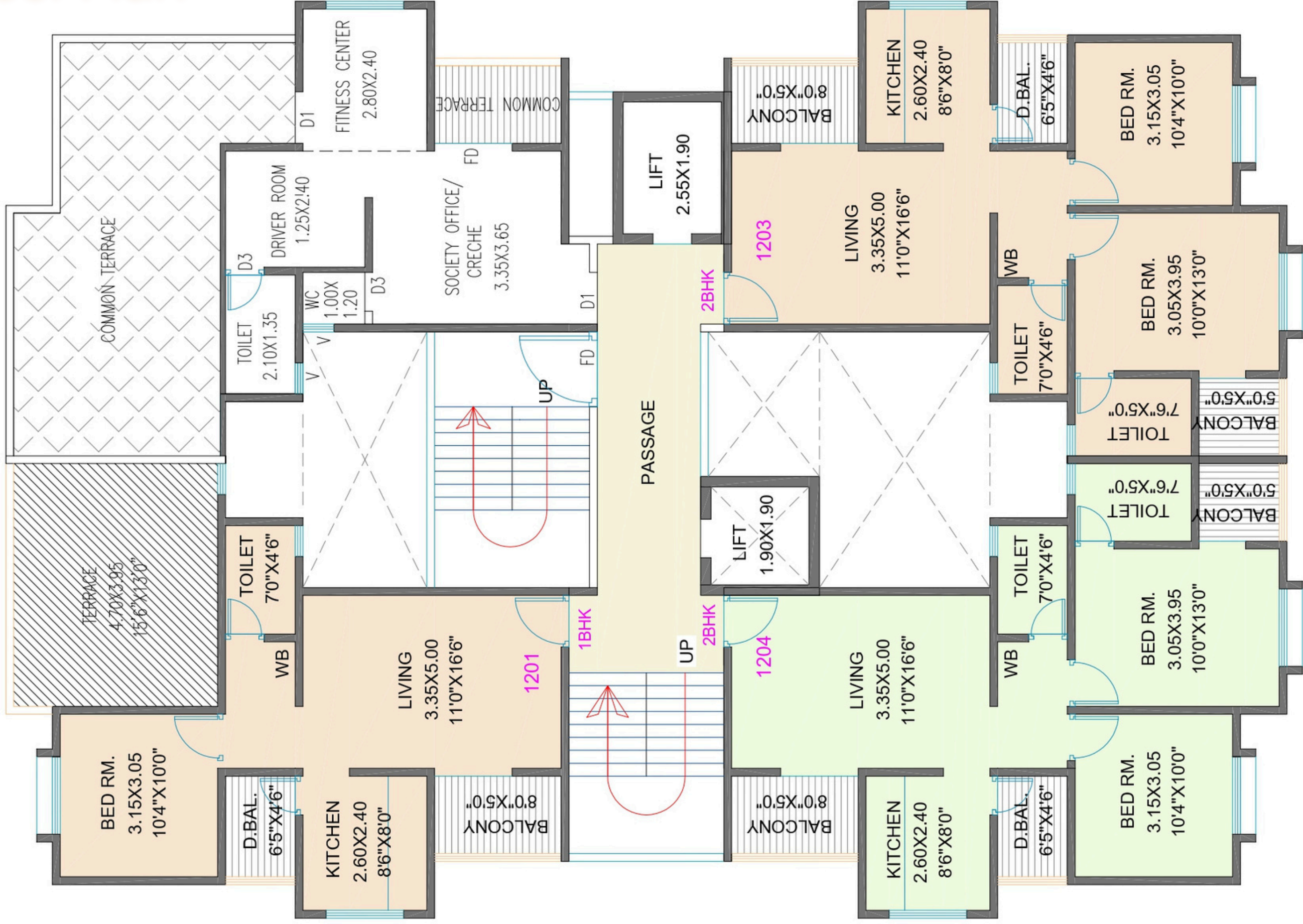


DATE - 21/08/2024

B+P+12 FLOOR

PRODUCED BY AN AUTODESK EDUCATIONAL PRODUCT

Floor Plan



12th FLOOR

APARTMENT NO.	CARPET AREA OF APARTMENT	AREA OF BALCONY ATTACHED TO APARTMENT	AREA OF BALCONY ATTACHED TO APARTMENT	TOTAL AREA IN SQ.M.	TOTAL AREA IN SQ.FT.
2BHK	46.60	12.02	8.63	67.25	723.88
1BHK	33.24	8.17	6.31	47.72	513.66

PROJECT DETAILS

PROPOSED RESI. BUILDING

S.NO.21 AT.- PUNAVALE, PUNE

PRODUCED BY AN AUTODESK EDUCATIONAL PRODUCT



DATE - 21/08/2024

B+P+12 FLOOR

Our Completed Projects

Sai Miracle
Rahatani

Sai Pearl
Pimple
Saudagar

Sai Marigold
Pimple
Saudagar

Sai Orchid
Pimple
Saudagar

Sai Arcade
Wakad

Sai Heritage
Pimple Gurav

Sai Avenue
Pimple
Saudagar

Sai Dreams
Pimple
Saudagar

Sai Grace
Punawale

Sai Bliss
Punawale

Sai Platinum
Pimple
Saudagar

Sai Highness
Pimple
Saudagar



Site Address:

Kate Wasti Rd, Kate Wasti, Punawale, Pimpri-
Chinchwad, Dattwadi, Maharashtra 411033

+91 80875 20089



Maha Rera - PR1260002502253 | www.maharera.mahaonline.gov.in



This brochure is for illustrative purposes only and does not constitute a legal offering. The developer reserves the right to make changes to plans, specifications, and

features without prior notice. Images shown are for representation only.